

ECU Voh(Min) = 2.0V
 ECU Vol(Max) = 0.0V

J2

1	GND (BLACK)
2	CTS# (BROWN)
3	+5V (RED)
4	TXD (ORANGE)
5	RXD (YELLOW)
6	RTS# (GREEN)

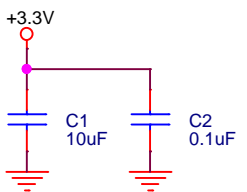
tp FT232R

J3

1	VENDER_OPTION1
2	J1850 Bus +
3	VENDER_OPTION3
4	CASE_GND
5	SIGNAL_GND
6	CAN (J-2234) High
7	ISO 9141-2 K-Line
8	VENDER_OPTION8
9	VENDER_OPTION9
10	J1850 Bus -
11	VENDER_OPTION11
12	VENDER_OPTION12
13	VENDER_OPTION13
14	CAN (J-2234) Low
15	ISO 9141-2 L-Line
16	+12V

OBD2

Input Characteristic of NL37WZ16USG
 $V_{ih}(\min) = 0.7 \times V_{CC} = 2.31V$
 $V_{il}(\max) = 0.3 \times V_{CC} = 0.99V$
 NL37WZ16 has 5.5V trerant (Both of 3.3V/5.0V FT232R can be used)



Title		
SELECT_MONITOR CABLE		
Size	Document Number	Rev
A	<Doc>	1.3
Date:	Sunday, February 26, 2023	Sheet 1 of 1